

- 1
- 2
- 3
- 4
- 5
- 6
- 7
- 8
- 9**
- 10
- 11
- 12
- 13
- 14
- 15
- 16
- 17
- 18

**MATERIAL**

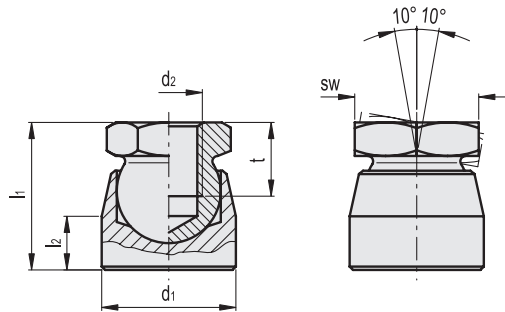
Zinc-plated steel, class 5.8 (tensile strength 500 N/mm<sup>2</sup>).

**FEATURES AND APPLICATIONS**

GN 346 thrust pads are normally used to transmit clamping forces. They can be adapted on irregular or non-parallel surfaces and allow the clamping preventing the rotating movement of the screw from being exerted directly on the piece to be locked.

**TECHNICAL DATA**

The values of max limit static load shown in the table were obtained through a series of laboratory tests with vertical static load.



Conversion Table	
1 mm = 0.039 inch	
d1	
mm	inch
16	0.63
20	0.79
24	0.94
30	1.18

**METRIC**

Code	Description	d1	d2	l1	l2	sw	tmin	Max. limit static load [N]	⚖️
GN.11983	GN 346-16-M8	16	M8	19	7	12	9	5000	20
GN.11985	GN 346-20-M10	20	M10	22	8	15	11	7500	35
GN.11987	GN 346-24-M12	24	M12	25	10	17	12	10000	55
GN.11989	GN 346-30-M16	30	M16	34	13	24	16	15000	115

Machine elements